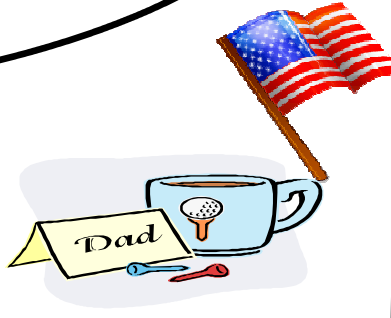


Willow Creek Veterinary Services, P.C.

May/June
2008



Mother's Day



Inside this issue:

Pest Protection	2
Heartworm	2
Fly Control	3
Fly Tag Special	3
Pet Toys	4

Let's Be "Fair"



Getting your pets ready for the fair is an important task in order to bring home the

First prize.

Having your pet well vaccinated will, in turn, help your pet be healthy at the fair and return home from the fair in good health. There are many diseases that your cat and dog should be protected against with vaccinations before going to the fair. In this article, we hope to explain what the vaccinations cover and therefore explain why your pet should be vaccinated.

Rabies is an incurable viral disease that affects the central nervous system. It is spread through contact with the saliva of an infected animal through bites or any break in the skin. This disease affects all mammals; including humans. Therefore it is very important that animals that are to be handled on a daily basis be vaccinated against this disease.

Feline diseases that are to be vaccinated against in order for

your pet to be shown at the fair include: rabies, feline viral rhinotracheitis, feline calicivirus, feline panleukopenia, feline chlamydia, and feline leukemia virus.

The vaccination that is often called feline distemper protects against many different diseases that affect the respiratory system. These diseases include feline viral rhinotracheitis, feline calicivirus, feline panleukopenia, and feline chlamydia. These diseases are highly contagious and can be transferred from cat to cat. However, the vaccinations that are used to protect your pet from these diseases are very effective in preventing the disease.

Feline leukemia virus (FeLV) is in a separate vaccine. This disease can cause a multitude of serious health problems for your cat—everything from cancerous conditions such as leukemia to a wide range of secondary infections caused by the destruction of the immune system. **Before vaccinating your cat for this disease, it is highly recommended that your cat be tested.** Cats that are infected

with FeLV will still spread the disease even if they are vaccinated.

Canine diseases that are to be vaccinated against in order for your pet to be shown at the fair include: rabies, canine distemper, adenovirus type 2, coronavirus, parainfluenza, parvovirus vaccine.

In one vaccination there are many different diseases combined to cover the following: canine distemper, adenovirus type 2, coronavirus, parainfluenza, and parvovirus. These diseases are again highly contagious and can be transferred from dog to dog. Some can be transferred from nose to nose contact, another one is transferred by salivary secretions, and another is spread through infected feces. Except the rabies vaccination, all of the other diseases are in one vaccination, so Fido will not have to be poked so many times.

If you have any questions, please feel free to contact us at (402)329-4805

Again, vaccinations, proper nutrition, and sanitary conditions are clearly your pet's best defense against diseases

Important Dates:

May

- 1-May Day
- 13-Mother's Day
- 15-Hug Your Cat Day
- 28-Memorial Day

June

- 6-D Day
- 14-Flag Day
- 17-Father's Day
- 24-Take Your Pet to Work Day

WE HAVE SOME NEW PET TOYS!!!
COME IN AND CHECK OUT OUR SELECTION
See toy article on page 4. We can also special order toys.



The Ticks are Coming!!!

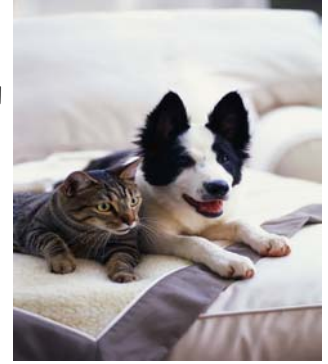
With the much awaited arrival of spring and warmer weather, we will be starting the seasonal battle with ticks and fleas. At WCVS, for flea and tick defense, we stock topical applications, which are *Frontline* for dogs and *Revolution* for cats.

Both of these products last for 1 month for tick and flea control. Revolution will also de-form your cat and control ear mites. Both come in 3 dose packages, or you may purchase an individual dose. Currently the Frontline includes a promotion of 1 free dose with the purchase of 6 doses (2 boxes).

Another pest we need to be concerned with is the mosquito, which is the carrier of the heart-worm. We recommend a yearly in-clinic blood test to determine whether your dog is infected with the heartworm.

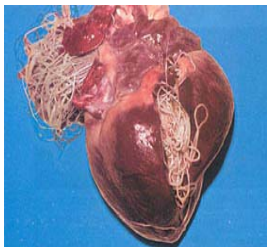
We recommend using, *Tri-Heart*, a monthly heartworm preventative tablet. Given once a month, it is a chewable tablet, so it is easy to give and convenient. It also includes a handy monthly timer that goes off every 30 days as a reminder. The current promotion for Tri-Heart is a \$5.00 rebate with the purchase of 12 tablets (2 boxes) which a years supply. Please be sure to ask for the coupon and free timer at the time of purchase.

Keep your pet's safe and healthy with Frontline, Revolution and Tri-Heart!!!!



TAKE IT TO "HEART"

Heartworm is a disease that is common in dogs in all areas throughout the world. Transmitted by mosquitoes, these are parasites that enter the bloodstream as larvae and migrate to the heart. Six months after reaching the heart, the larvae turn into adults, and that's when problems begin.



Full-grown heartworms eventually fill the heart, blocking the flow of blood to the lungs and doing

damage to the heart and may lead to death.

An important part of a complete heartworm prevention program is testing. Testing ensures that your pet is free of adult heartworms, and ready to start or continue on heartworm preventative medication.

The American Heartworm Society

(AHS) estimates that only 50% of dogs in areas where heartworm occurs are actually on heartworm preventatives. Of those prescribed heartworm prevention products, only about 75% receive all of the doses.

All dogs should be tested annually for heartworm infection. Since not all pets receive the proper dose of preventives, the AHS recommends a more conservative testing routine than in the past. Annual testing ensures that an infection is caught in plenty of time to effectively manage it.

Puppies under seven months of age can be started on heartworm preventives without first being tested. This is because it can take up to six and one half months after being bitten by infected mosquitoes before the dog will test positive for heartworm.

A heartworm test is a test to check for the evidence of the parasite *Dirofilaria immitis*, more commonly known as heartworm, in your

dog's bloodstream.

There are different types of heartworm tests, which require a blood sample from your pet. The first method developed was to put a drop of blood on a microscope slide and look for baby heartworms, which are microscopic and are known as microfilaria. The most common test today is antigen tests, which we use here at Willow Creek Veterinary Services. Antigen test detect specific antigens from adult female heartworms. A test should be performed on any dog showing signs of heartworm disease. Those symptoms include: exercise intolerance, coughing, loss of appetite, weight loss, labored breathing, or heart disease.

Please call the clinic 402-329-4805 to schedule an appointment for a heartworm test. It will do your pet's heart good, as well as yours, knowing you are doing all you can for your pet's health.

FLY CONTROL

Flies are not only a nuisance but they have a serious economic impact on the cattle industry. Horn flies can result in reduced weight gain of up to half a pound per day. As few as 50-200 horn flies per animal can result in measurable weight loss. Face flies are a vector of Pinkeye, which also causes irritation, weight loss, and can lead to blindness. I think everyone would be happy if we could eliminate flies.

Unfortunately, the little pests are really hard to get rid of! They have the ability to fly up to 3 miles, they reproduce rapidly, and they develop resistance to pesticides very quickly. This has led many producers to give up on fly control all together. Although difficult, there are some effective strategies for controlling flies.

Face flies and horn flies are the main problem for cattle that are on pasture. Face flies look like house flies but are slightly larger. They feed on cattle secretions such as tears, saliva, nasal discharge and blood from wounds. Face flies lay their eggs in fresh, undisturbed manure and they survive the winter by living in barns and homes, particularly attics. They are found on the nose, face and backs of cattle. Adult flies are strong fliers capable of traveling several miles. These flies only spend 5-10 minutes per day on an animal then leave

to rest on shaded vegetation. This is one reason why backrubbers, dust bags and topical insecticides may not control face flies very well.

Horn flies are small flies that live on the backs of cattle. They lay their eggs in fresh, undisturbed manure and they survive the winter as pupae in or beneath cattle droppings. Bulls tend to have the highest numbers of horn flies due to testosterone being an attractant. These flies can also travel up to 1.5 miles. These flies inflict a painful bite causing irritation, blood and weight loss.

Methods of control for face and horn flies include ear tags, topical insecticides, backrubbers, dust bags, and oral larvicides. It is important to remember that effective control of flies does not mean totally eliminating them. Striving to get rid of every fly will most certainly lead to resistance problems. To effectively control flies several strategies can be employed: several control measures should be used in conjunction, control measures should not begin until fly season has started, preferably waiting until there are about 50 horn flies per animal.

In order to maximize the benefit of fly tags and to minimize resistance issues, a tag should be applied to each ear, remove tags at end of season, and rotate the type of chemical on the tags:

1 year pyrethroid, 2 years organophosphate. This year we are carrying Co-Ral ear tags from Bayer. They are organophosphate.

Backrubbers and dust bags can be very effective for control of horn flies. In order to combat resistance, chemicals can be rotated in these devices as well. They should be located near salt/mineral stations, in alleyways or near water sources. These control measures are only helpful for face flies if they are in contact with their face.

Oral larvicides are commonly found in free choice mineral. They can be very effective if all the surrounding cattle are eating the same mineral; if not flies from neighboring herds can come visit your cattle. In my experience, however, fly numbers were still a lot lower than normal with the use of oral larvicides.

Please contact us if you have any questions about fly control. We would be happy to design a program that works for your operation.



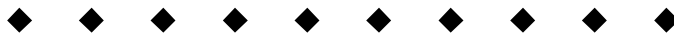
Spring/summer SPECIALS

Co Ral Fly Tags Purchase/pay for in April—20% off Purchase/pay for in May—10% off



Get 8% back when you purchase \$100 of Boss Pour-On

Get 10% back when you purchase \$250 of Piliguard Pinkeye +7
(offer good March 1-September 30, 2008)



Hurry in or call to take advantage of these great SAVINGS!!!

Willow Creek Veterinary

Willow Creek Veterinary
Services, P.C.
85420 549th Ave.
P.O. Box 123

Phone: 402-329-4805/1-
888-371-7474
Fax: 402-329-6421
Email: wcvet@ptcnet.net

Visit us
willowcreekvet.com

Dog Toys

What type of dog toy does your dog prefer? Does your dog like to chew, tug, cuddle, fetch, or be creative with his toys? Is fluffy, rubbery, squeaky, bouncy, or ropey his preference?

There are many options to consider when choosing a dog toy. It is important that the toy be safe, entertaining, and just right for your dog's personality.

Why have toys? Toys may seem like just something else to pick up around the house. On the contrary, they play an important role in keeping a dog mentally and physically healthy.

Toys provide dogs with an outlet for excess energy and can prevent them from becoming bored or depressed. This outlet may also prevent them from chewing on or playing with other things such as the couch or the garbage. Dog toys can also challenge a dog's problem-solving skills, provide environmental enrichment, and allevi-

ate separation anxiety.

Toys encourage play and exercise, which help keep a dog physically fit. Chew toys can also be helpful for oral health by reducing plaque and strengthening jaw muscles. Puppies can especially benefit from chew toys while teething.

Toy Safety. Note every toy is suitable for every dog; they should be carefully selected based on your pet's needs, his size and his preferences.

What's most important when choosing a dog toy? Safety comes first. Be sure the toy is the appropriate size for your dog. Do not choose a toy that can be easily swallowed or become lodged in your dog's throat. Also, a large toy can be cumbersome to the small canine, and could potentially cause an injury. For example, a tennis ball may not be the best option for a large Rottweiler, and a heavy rope

would be awkward for a Chihuahua.

Durability is the other aspect of safety. Some dogs do fine with soft, fluffy toys or delicate, rubber toys. Other will destroy and eat them. This can result in a dangerous gastrointestinal obstruction.

Be careful with toys that have removable parts. If you give your dog a stuffed animal to enjoy, cut off any pieces which could be easily chewed off, such as plastic eyes. Squeakers can also be dangerous. Before leaving your dog unsupervised with a squeaky toy, be sure he is not tempted to be destructive to get to the squeaker. This is true with any toy: supervise, supervise, supervise!!! 100% confidence in a toy's safety and your dog's behavior is crucial before leaving a dog alone with the toy.

Come see our collection at the clinic. Looking for one particular toy? Ask, we may be able to order it for you.